

# **moss** SINGLE HUNG VINYL WINDOWS

## *CAROLINA SERIES MODEL • 1735-6*



- ATTRACTIVE BRICK MOULD LOOK DESIGN.**
- BUILT-IN J-CHANNEL EASILY ACCEPTS VINYL SIDING.**
- 7/8 INCH WIDE GRILLE-BETWEEN-GLASS (GBG), OR 1 INCH PROFILE GRILL.**
- WELDED SASH AND TOP MASTER FRAME.**
- QUALITY BLOCK AND TACKLE BALANCE SYSTEM.**
- FACTORY ASSEMBLED MULTIPLE UNITS WITH CONTINUOUS HEAD AND SILL.**
- CONVENIENT TILT-IN / TAKE-OUT BOTTOM SASH.**
- FULL 5/8 INCH INSULATED DuraSeal GLASS WITH 10 YEAR WARRANTY.**
- IMPROVED HEAVY-DUTY SLOPE SILL FEATURE.**
- INTEGRAL, PREPUNCHED NAIL FIN.**
- ALL WINDOWS DRYWALL ACCESSIBLE.**
- INCLUDES STURDY FIBER-GLASS HALF SCREEN.**
- IN BOTH STOCK AND CUSTOM SIZES.**
- AVAILABLE IN EUROPEAN WHITE AND TUSCANY BEIGE.**
- OPTIONAL HIGH PERFORMANCE GLASS - ENERGY STAR® COMPLIANT.**



Moss new construction solid vinyl windows are extruded from a superior rigid vinyl which offers outstanding insulating properties, exceptional strength, long lasting durability and freedom from maintenance. This solid vinyl retains its color, never requires painting and does not show scratches. Also it will not rot, shrink or swell and is immune to corrosion. These multi-chambered insulating units have been designed for year round energy efficiency and protection.

### **High Performance MODEL 1740**

*FOR HIGH WIND COASTAL AREAS - MEETS DP50 RATING WITH THE SAME QUALITY FEATURES THROUGHOUT... PLUS, A FULLY REINFORCED WELDED BOTTOM SASH. ALL AT A COMPETITIVE PRICE.*

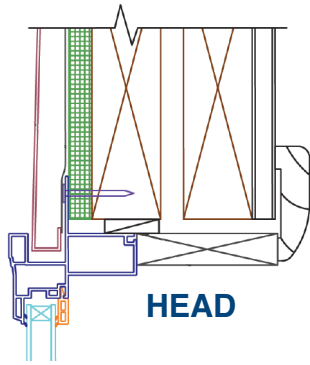
### **FACTORY ASSEMBLED MULTIPLE UNIT**

Save time, possible leakage and costly labor by specifying Moss assembled one-Piece Twin and Triple Units. Heavy duty jamb sections and continuous head and sill members add strength and quality appearance.

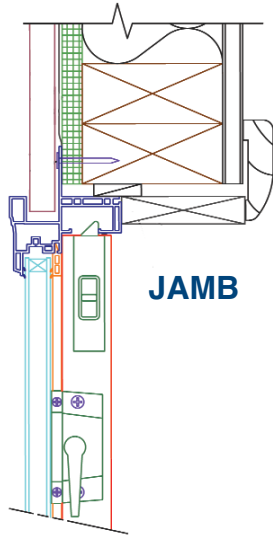


**enviro**  **sealed**  
windows™

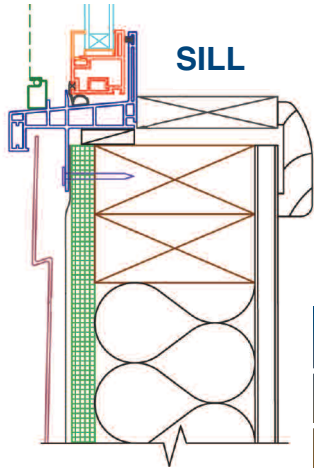
## TYPICAL INSTALLATION



HEAD



JAMB



SILL

### GLASS OPTIONS

- CLEAR INSULATED LOW E
- LOW E AND ARGON TINTED

## PERFORMANCE RATING

	Low-E 1735-40	Low-E 1736-41	Low-E Argon
"U" Value	.50	.34	.29
Air Infiltration	.10 cfm/ft.	.10 cfm/ft.	.10 cfm/ft.
SHGC	.59	.31	.30
VT	.61	.51	.58
Rating	DP35/DP50	DP35/DP50	DP35/DP50

Note: Manufacturer reserves the right to alter design and materials and incorporate them in production schedules.

Windows tested without grids.



tru seal technologies

DuraSeal's patent pending design incorporates unique materials and a breakthrough in continuous composite manufacturing processes. This advanced technology offers a higher performance spacer system at a competitive price. DuraSeal takes optimum advantage of laminates and adhesives to reduce thermal conductivity while improving surface and corner appearance over other flexible spacers. This multi-layered spacer system featuring specialized components results in superior window performance and aesthetics over other warm edge spacers.



### SUPPLY COMPANY

#### Manufacturing/Distribution

**CHARLOTTE**  
CORP OFFICES/MFG  
5001 NORTH GRAHAM ST  
CHARLOTTE, NC 28269  
704.596.8717  
FAX 704.598.9012

**RICHMOND**  
11253 LEADBETTER RD  
ASHLAND, VA 23005  
804.798.8332  
1.800.741.3802

**ATLANTA**  
1 DEAN DRIVE  
CARTERSVILLE, GA 30121  
770.387.9444  
FAX 770.387.9105

A wholly owned subsidiary  
**MAYFAIR**  
WINDOWS & DOORS  
4100 CAMERON ST  
LAFAYETTE, LA 70506  
337.233.2470  
FAX 337.235.6657

## SIZE INFORMATION

### CORRESPONDING WINDOW SIZES

ALUMINUM		WOOD	
NOMINAL	ACTUAL BUCK	NOMINAL	ACTUAL BUCK
1830	19 1/2 X 35 1/2	1832	19 1/2 X 37 1/2
1840	19 1/2 X 47 1/2	18310	19 1/2 X 45 1/2
1844	19 1/2 X 51 1/2	1846	19 1/2 X 53 1/2
1850	19 1/2 X 59 1/2	1852	19 1/2 X 61 1/2
<b>1860E</b>	<b>19 1/2 X 71 1/2</b>	<b>1865E</b>	<b>19 1/2 X 65 1/2</b>
2030	23 1/2 X 35 1/2	<b>1862E</b>	<b>19 1/2 X 73 1/2</b>
2040	23 1/2 X 47 1/2	2032	23 1/2 X 37 1/2
2044	23 1/2 X 51 1/2	20310	23 1/2 X 45 1/2
2050	23 1/2 X 59 1/2	2046	23 1/2 X 53 1/2
<b>2060E</b>	<b>23 1/2 X 71 1/2</b>	2052	23 1/2 X 61 1/2
2430	27 1/2 X 35 1/2	<b>2056E</b>	<b>23 1/2 X 65 1/2</b>
2440	27 1/2 X 47 1/2	<b>2062E</b>	<b>23 1/2 X 73 1/2</b>
2444	27 1/2 X 51 1/2	2432	27 1/2 X 37 1/2
2450	27 1/2 X 59 1/2	24310	27 1/2 X 45 1/2
<b>2460E</b>	<b>27 1/2 X 71 1/2</b>	2444	27 1/2 X 53 1/2
2830	31 1/2 X 35 1/2	2452	27 1/2 X 61 1/2
2840	31 1/2 X 47 1/2	<b>2456E</b>	<b>27 1/2 X 65 1/2</b>
2844	31 1/2 X 51 1/2	<b>2462E</b>	<b>27 1/2 X 73 1/2</b>
2850	31 1/2 X 59 1/2	2832	31 1/2 X 37 1/2
<b>2860E</b>	<b>31 1/2 X 71 1/2</b>	28310	31 1/2 X 45 1/2
3030	35 1/2 X 35 1/2	2846	31 1/2 X 53 1/2
3040	35 1/2 X 47 1/2	2852	31 1/2 X 61 1/2
3044	35 1/2 X 51 1/2	<b>2856E</b>	<b>31 1/2 X 65 1/2</b>
3050	35 1/2 X 59 1/2	<b>2862E</b>	<b>31 1/2 X 73 1/2</b>
<b>3060E</b>	<b>35 1/2 X 71 1/2</b>	3032	35 1/2 X 37 1/2
3430	39 1/2 X 35 1/2	30310	35 1/2 X 45 1/2
3440	39 1/2 X 47 1/2	3046	35 1/2 X 53 1/2
3444	39 1/2 X 51 1/2	3052	35 1/2 X 61 1/2
3450	39 1/2 X 59 1/2	<b>3056E</b>	<b>35 1/2 X 65 1/2</b>
<b>3460E</b>	<b>39 1/2 X 71 1/2</b>	<b>3062E</b>	<b>35 1/2 X 73 1/2</b>
		3432	39 1/2 X 37 1/2
		34310	39 1/2 X 45 1/2
		3446	39 1/2 X 53 1/2
		3452	39 1/2 X 61 1/2
		<b>3456E</b>	<b>39 1/2 X 65 1/2</b>
		<b>3462E</b>	<b>39 1/2 X 73 1/2</b>

Note: Add 3/4 inch to width and height above for rough opening size.

## \*\* 10 YEAR WARRANTY \*\* ON SEAL FAILURE

